



CDX•D8™ Instruction Manual

Digital **AUDIO** LABS

Contact Information

Digital Audio Labs
1276 Park Road
Chanhassen, MN 55317
USA
Tel: +1 (952) 401-7700
Fax: +1 (952) 401-7725
Email: support@digitalaudio.com
Web: <http://www.digitalaudio.com/>

Legal Notices

CDX•D8 Instruction Manual Copyright © 2001-2004, LR Sound, Inc. All Rights Reserved.

CDX•D8 device driver software Copyright © 2001-2004, LR Sound, Inc. All Rights Reserved.
Unpublished - rights reserved under the Copyright laws of the United States.

CDX-D8, the stylized CDX•D8 name and logo, Digital Audio Labs, the Digital Audio Labs logo, and WavSync are trademarks of LR Sound, Inc.

Microsoft, Windows and Windows NT are registered trademarks of Microsoft Corporation.

Pentium is a registered trademark of Intel Corporation.

Cubase and VST are registered trademarks and ASIO is a trademark of Steinberg Media Technologies AG.

All other company and product names mentioned herein may be trademarks or registered trademarks of their respective owners.

Some parts of the device driver software for the CDX•D8 were developed using Compuware DriverWorks and VToolsD. This product contains confidential information and trade secrets of Compuware Corporation. Use, disclosure, or reproduction is prohibited without the prior express written permission of Compuware Corporation. DriverWorks and VToolsD Copyright © 1998, Compuware Corporation. All Rights Reserved. Unpublished - rights reserved under the Copyright laws of the United States. Compuware, DriverWorks and VToolsD are trademarks or registered trademarks of Compuware Corporation.

Table of Contents

Contact Information.....	i
Legal Notices.....	i
Table of Contents.....	ii
Parts List.....	1
System Requirements.....	1
Specifications.....	1
Installing The CDX•D8 In Your Computer.....	2
Step 1: Shut down your computer.....	2
<i>Windows 2000, Windows XP (domain):</i>	2
<i>Windows XP (workgroup):</i>	2
Step 2: Remove the cover from your computer.....	3
Step 3: Prepare to install the CDX•D8.....	3
Step 4: Install the CDX•D8.....	4
Step 5: Reattach the cover to your computer.....	5
Step 6: Restart your computer and prepare to install the CDX•D8 driver software.....	5
Step 7: Install the CDX•D8 device driver software.....	6
<i>Windows 2000:</i>	6
<i>Windows XP:</i>	6
Step 8: Install the CDX•D8 ASIO driver software (optional).....	7
Step 9: Install the CDX•D8 Control Panel desktop shortcut (optional).....	8
Operating the CDX•D8.....	9
Configuration Settings.....	10
Configuration page.....	11
Analog Output page.....	13
AES/EBU Outputs page.....	14
Input Lock page.....	15
Version page.....	16
Clocks + Sync page.....	17
ASIO page.....	20
Using More Than One CDX•D8 Card.....	21
Jumper Settings and Connector Information.....	22
JSYNC Connector.....	23
AES/EBU and Word Clock Breakout Cable Connector Pinout.....	23
FCC and CE Compliance Statements.....	24
Warranty Statement.....	24

(This page intentionally left blank)

CDX•D8™ Instruction Manual

Parts List

- CDX•D8 AES/EBU Interface PCI card in anti-static bag
- DB-25 to XLR/BNC breakout cable for AES/EBU and word clock connectors
- CDX•D8 Driver Installation CD-ROM

System Requirements

- PC with available PCI slot
(synchronization of multiple cards requires adjacent available PCI slots)
- Pentium® II 300 MHz CPU minimum,
Pentium® III 450 MHz or faster recommended
(some audio applications may require faster CPUs)
- 128 MB system memory minimum, 256 MB or more recommended
(some audio applications may require additional memory)
- CD-ROM drive
- Windows® 2000 Professional or Windows® XP Professional
- Windows® multimedia-compatible or ASIO™-compatible audio application software

Specifications

- 4 x XLR AES/EBU inputs (8 channels) via breakout cable
- 4 x XLR AES/EBU outputs (8 channels) via breakout cable
- 1 x BNC word clock input via breakout cable
TTL-compatible; 50 Ω coaxial cable recommended
- 1 x BNC word clock output via breakout cable
TTL-compatible; 50 Ω coaxial cable recommended
- 2 x 1/4" (6.3 mm) balanced / unbalanced analog monitor outputs
+4 dBu or -10 dBV, jumper-selectable
SNR: 108 dBFS
THD+n: 92 dB @ 1 kHz
(A-weighted, 44.1 kHz, +4 dBu setting)
- Supported sample rates: 32, 44.1, 48, 88.2, and 96 kHz, stereo mode
- Wave driver also supports "single channel, double frequency" mode, allowing
88.2/96/176.4/192 kHz mono over a 44.1/48/88.2/96 kHz AES/EBU stereo pair
- Supported bit rates: 16 and 24 bits per sample
- Master clock sources: internal clock, AES/EBU inputs, word clock input
- High-performance PLL for low clock jitter
- Multiple card support
(number of cards supported is operating system dependent)
- Professional (AES3-1985/1992, EBU Tech. 3250-E, EIAJ CP-340 Type I)
and consumer (EIAJ CP-340 Type II, IEC 958) modes
- Non-audio mode

Installing The CDX•D8 In Your Computer

ATTENTION! *Your computer must be turned off and unplugged when installing or removing the CDX•D8. Installing or removing any add-on card with the computer turned on may permanently damage the add-on card and/or your computer. Many computers appear to be off when, in fact, they are “sleeping” in Stand By (a low-power operating mode). It is imperative that you shut down your computer, turn it off and unplug it before installing or removing the CDX•D8.*

Note: You will need a Phillips Head Screwdriver for this installation. An anti-static wristband is recommended but not required.

Step 1: Shut down your computer

a) Shut down Windows. Please follow the instructions that match the version of Windows you have on your computer.

Windows 2000, Windows XP (domain):

Click the Windows “Start” button and select “Shut Down”. Then, when the “Shut Down Windows” dialog appears, select “Shut down” and click “OK”.

Windows XP (workgroup):

Click the Windows “Start” button and select “Turn off computer”. Then, when the “Turn off computer” dialog appears, click “Turn off”.

b) Turn off the computer.

Note: Many computers do this automatically after Windows has shut down. Some computers may require you to manually turn off the power by pushing a button or flipping a switch after Windows shuts down. Please refer to the operating instructions that came with your computer if you are unsure how to turn off your computer.

c) After the computer has been shut down and turned off, unplug the AC power cord from your computer.

Leave the computer unplugged until instructed to plug it back in.

Step 2: Remove the cover from your computer

- a) Before opening your computer, please note that removing the cover of some computers will void the manufacturer's warranty. Please check the warranty statement that came with your computer to be sure you are authorized to open your computer and install the CDX•D8 yourself. If opening your computer will void the warranty, we recommend that you have the CDX•D8 installed by a manufacturer-approved technician.
- b) Refer to your computer's operating manual for instructions on how to remove the cover from your computer. Many computers have covers that are fastened to the computer by screws on the rear of the unit. Put the screws in a safe place after removing them, so they do not accidentally fall into the computer.

Step 3: Prepare to install the CDX•D8

- a) Place the CDX•D8 box next to your open computer. Do not remove the CDX•D8 card from its anti-static bag.
- b) Touch a metal part of the computer chassis to discharge any static electricity that could damage the CDX•D8 card or your computer. At this time if you have an anti-static wristband, you should put on the wristband and connect the wristband to the chassis of the computer.

Do not reach into the computer or touch any cards or wires until you have done this. Computers contain sensitive electronic devices that are easily damaged by static electricity.

- c) Locate an empty PCI slot in your computer.
- d) If the back panel of the empty PCI slot has a cover plate, remove it at this time.

Note: Some cover plates are attached with a screw. Some cover plates snap out, but have a pre-installed screw for attaching add-on cards; if your computer uses snap-out cover plates, please also remove the screw at this time. If you are not sure how to do this, please refer to your computer's operating manual for instructions or contact your computer manufacturer's customer support department.

e) If you are installing more than one CDX•D8 card in your computer, repeat steps 3(c) and 3(d) to prepare empty PCI slots for each CDX•D8 card to be installed. Please see the section “Using More Than One CDX•D8 Card” below for more information on using multiple CDX•D8 cards.

Step 4: Install the CDX•D8

a) Touch a metal part of the computer chassis to discharge any static electricity that could damage the CDX•D8 card or your computer.

b) Carefully open and gently remove the CDX•D8 from its anti-static bag. Handle the CDX•D8 card carefully. Like your computer, the CDX•D8 is a sensitive electronic device, and can be easily damaged by static electricity. Do not bend or drop the CDX•D8 card.

c) If you want to change the output level of the CDX•D8 analog monitor outputs, you may do it at this time. By default, the CDX•D8 is shipped with the analog monitor output levels set to +4 dBu. To change the analog monitor output levels to –10 dBV, remove jumpers P4R and P4L, located slightly higher and to the right of the ¼" analog output jacks, as you look at the board with the front of the board facing you, the gold PCI connector at the bottom and the ¼" analog output jacks and the DB-25 jack on the left. If you remove the jumpers, do not throw them away; rather, save them in case you would like to change the analog monitor output levels back to +4 dBu. For more information, see the “Jumper Settings and Connector Information” section below.

d) Insert the CDX•D8 card into the empty PCI slot you located in Step 3(c). Press down gently to seat the card in the PCI slot. When the card is fully inserted, the bracket on the back of the CDX•D8 will sit snugly against the back of your computer. You may hear or feel a “click” as the CDX•D8 is seated into the PCI slot. Only press hard enough to seat the CDX•D8 card in the PCI slot. Applying too much pressure can damage the motherboard in your computer. If you have trouble with this step, please contact a manufacturer-approved technician for installation assistance.

e) If you are installing more than one CDX•D8 card in your computer, repeat steps 4(a) through 4(d) for each CDX•D8 card to be installed.

Note: If you want your CDX•D8 cards to use the same sample clock and/or start and stop at the same time, you will need to install a synchronization cable between each of the CDX•D8 cards. Please see the “Using More Than One CDX•D8 Card” section below for further information.

f) Secure each CDX•D8 card in your computer using the screw(s) you removed in Step 3(d). Do not over-tighten the screw. Making the screw snug is all that is needed.

g) Attach the supplied DB-25 to XLR/BNC breakout cable to each CDX•D8 by inserting the cable’s DB-25 plug into the matching DB-25 socket on the back of the CDX•D8 card. The plug will only go in one way; do not attempt to force the cable connector into the card. After the cable has been plugged into the card, secure by gently tightening the two thumbscrews on either side of the cable connector. Do not over-tighten. Making the thumbscrew snug is all that is needed.

Step 5: Reattach the cover to your computer

a) Refer to your computer’s operating manual for instructions on how to reattach the cover to your computer. If your cover attaches with screws, be sure to secure the cover with all the screws you removed in Step 2(b).

Step 6: Restart your computer and prepare to install the CDX•D8 driver software

a) Plug the AC power cord back into your computer.

b) Turn on your computer and let it boot normally. Some computers will require you to “log in” after the system has booted.

c) Insert the CDX•D8 Driver Installation CD into your CD-ROM drive.

d) At this point, depending on your version of Windows, you may see a “New Hardware Found” or “Add New Hardware” dialog. Please refer to the appropriate instructions below for information on installing the CDX•D8 driver software on your computer. Be sure to follow the instructions for the version of Windows you have on your computer.

Step 7: Install the CDX•D8 device driver software

Please follow the instructions that match the version of Windows you have on your computer.

Windows 2000:

- a) When Windows detects the CDX•D8 card, the “Found New Hardware Wizard” will appear to help you install the device drivers for the CDX•D8. When the wizard appears, click “Next>”.
- b) Select “Search for a suitable driver for my device (recommended)” and click “Next>”.
- c) Select “Specify a location” and click “Next>”.
- d) Browse into the root directory of your CDX•D8 Driver Installation CD. Then click “OK” to select the directory. Click “Next>” to instruct Windows to install the new driver.
- e) If Windows displays a window saying “Digital Signature Not Found”, click “Yes” to continue the driver installation process.
- f) Wait for Windows to install the driver files on your computer. When installation is complete, click “Finish” to end the Found New Hardware Wizard.
- g) When the system asks if you want to restart the computer, remove the CDX•D8 Driver Installation CD from your CD-ROM drive and click “Yes”. This step is required to complete the installation process.

Windows XP:

- a) When Windows detects the CDX•D8 card, the “Found New Hardware Wizard” will appear to help you install the device drivers for the CDX•D8. When the wizard appears, select “Install from a list or specific location (Advanced)” and click “Next>”.
- b) Select “Search for the best driver in these locations”, and make sure the “Include this location in the search” box is checked. Then click the “Browse...” button and browse into the root directory of your CDX•D8 Driver Installation CD. Then click “OK” to select the directory.

Click “Next>” to instruct Windows to install the new driver.

c) If Windows displays a window saying “The software you are installing for this hardware has not passed Windows Logo testing”, click “Continue Anyway” to continue the driver installation process. Because Microsoft has not tested this driver, this window warns you that untested drivers can destabilize your computer. This is not an error. It is simply a notice that Microsoft does not guarantee the quality of this driver.

d) Wait for Windows to install the driver files on your computer. When installation is complete, click “Finish” to end the Found New Hardware Wizard.

e) When the system asks if you want to restart the computer, remove the CDX•D8 Driver Installation CD from your CD-ROM drive and click “Yes”. This step is required to complete the installation process.

Step 8: Install the CDX•D8 ASIO driver software (optional)

Note: This step is necessary only if you will be using ASIO-compatible audio software, such as Cubase/VST. If your audio software uses only standard Windows MME (Multimedia or Wave) drivers, this step is not required.

Note: You must complete step 7 above before installing the CDX•D8 ASIO driver software.

a) Insert the CDX•D8 Driver Installation CD into your CD-ROM drive.

b) Open a Windows Explorer window and browse into the “ASIO” subdirectory on your CDX•D8 Driver Installation CD.

c) Find the file that looks like a notepad with writing on it and a small yellow gear in the lower right corner. Depending on your system, this file will be called either “cdxd8a” or “cdxd8a.inf”. Right-click on that file and select “Install”.

d) After the system finishes installing the CDX•D8 ASIO driver, remove the CDX•D8 Driver Installation CD from your CD-ROM drive.

You can now use the CDX•D8 with ASIO-compatible audio software by selecting the “ASIO CDX•D8” driver from within that software. Please refer to the manual for your audio software for information on how to change the ASIO driver selection.

Step 9: Install the CDX•D8 Control Panel desktop shortcut (optional)

Note: This step is necessary only if you will need to change the default configuration settings for the CDX•D8 (internal clocks, professional mode, no emphasis, default analog output monitor settings, no digital output monitoring, etc.). If you will need to change any of these settings, we recommend you install the CDX•D8 Control Panel desktop shortcut.

- a) Insert the CDX•D8 Driver Installation CD into your CD-ROM drive.
- b) Open a Windows Explorer window and browse into your CDX•D8 Driver Installation CD.
- c) Find the file that shows a blue sheet of paper with writing on it that is curled up on the top and bottom. Depending on your system, this file will be called either “cdxd8” or “cdxd8.vbs”. Double-click on that file to install the desktop shortcut to the CDX•D8 Control Panel.
- d) After the system finishes installing the CDX•D8 Control Panel shortcut, remove the CDX•D8 Driver Installation CD from your CD-ROM drive.

You can now access the CDX•D8 Control Panel by double-clicking the “Configure CDX•D8” icon on your desktop.

Note: If you are unable to use the desktop shortcut installer, as described above, you can manually install the desktop shortcut by right-clicking in an empty area on your Windows desktop, clicking “New” and “Shortcut”, entering:

`RUNDLL32 cdxd8,Configure`

in the “Command line:” box (type exactly as shown above), clicking “Next>”, entering:

`Configure CDX•D8`

as the name of the shortcut and clicking “Finish”.

Operating the CDX•D8

Operating your CDX•D8 is similar to operating any other sound card:

- Connect your AES/EBU digital I/O devices to the CDX•D8 breakout cable XLR connectors. The wire going into each XLR connector is labeled with “IN” or “OUT” and the channel pair number (1-4). For example, “IN2” is the input connector for AES/EBU channel pair 2, and “OUT4” is the output connector for AES/EBU channel pair 4.
- If you need to sync to one of the AES/EBU inputs (use one of the AES/EBU inputs as the clock master), please see the “Configuration Settings: Clocks + Sync page” section below.
- If desired, use the BNC word clock in/out connectors to receive or supply a word clock signal from/to the rest of your studio. The wire going into each BNC connector is labeled either “WCIN” (word clock input) or “WCOUT” (word clock output). Please see the “Configuration Settings: Configuration page” and “Configuration Settings: Clocks + Sync page” sections below for further information.
- Operate the CDX•D8 Control Panel controls to select the desired operating modes, as described below.
- Use your audio application software. Specific operating instructions vary from application to application, and are outside the scope of this manual. Please refer to the documentation that came with your audio application software for further information.
- The CDX•D8 card will appear as four input devices and four output devices, one for each AES/EBU channel pair. The devices will be called “CDX•D8: 1/2” for the first pair, “CDX•D8: 3/4” for the second pair, “CDX•D8: 5/6” for the third pair and “CDX•D8: 7/8” for the fourth pair. If you change the card name using the CDX•D8 Control Panel, the name you enter will be shown instead of “CDX•D8”. See the “Configuration Settings: Configuration page” section below for more information.

Configuration Settings

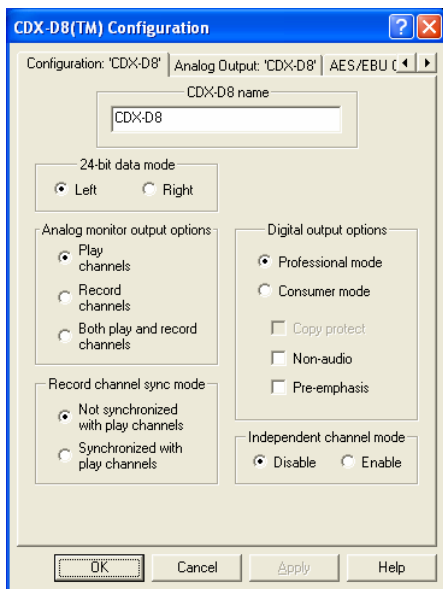
The CDX•D8 includes several configuration settings that can be changed using the CDX•D8 Control Panel. If you want to change any of the CDX•D8 configuration settings, we recommend installing the CDX•D8 Control Panel desktop shortcut, as described in installation Step 9 above.

To access the CDX•D8 Control Panel, double-click the “Configure CDX•D8” icon on your desktop. This will display a multi-page tabbed dialog that contains all the software-configurable options available on the CDX•D8. Each page contains a group of related functions.

If you have more than one CDX•D8 installed in your computer, you will see several groups of pages, one for each CDX•D8. Each page will include the name of the specific CDX•D8 card to which the settings apply.

Most pages in the CDX•D8 Control Panel provide on-line assistance via the “Help” button at the bottom of the dialog. Help for each configuration setting can also be obtained by clicking the “?” help button at the top of the dialog and then clicking on the control(s) for that configuration setting.

Configuration page



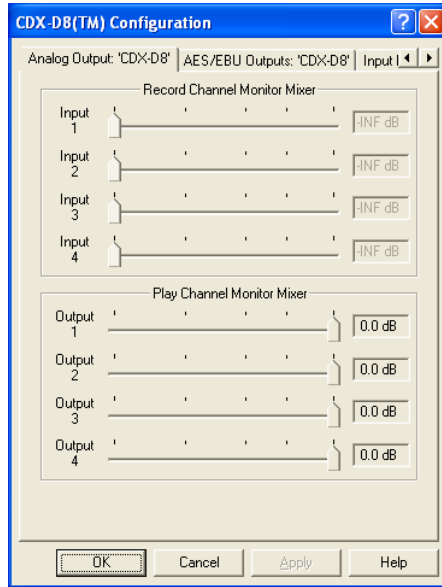
This page contains general configuration settings for the CDX•D8.

- To change the card name, click in the box labeled “CDX•D8 name”, and enter the name you want to assign to the CDX•D8 card. This name will appear in your audio applications and in configuration dialogs, so you can more easily identify each CDX•D8 you have installed.
- To change the way the driver interprets 24-bit audio data sent as a 32-bit value, operate the 24-bit data mode controls. Some audio applications send 24-bit audio data to wave drivers as a 32-bit value. This control allows you to specify whether the 24-bit audio data is in the left side or the right side of that 32-bit value. If your audio application sends 24-bit data as a 32-bit value, and the audio is at either too high or too low a level, try using the other selection for this control. Most of the time, you will want to leave this set as “Left”.
- To select between monitoring record channels, play channels or both record and play channels, operate the Analog monitor output selection controls. If you choose to monitor both record and play channels, all

channels must use the same clock source and run at the same sample rate. **Please note that this selection also affects the ability to directly monitor AES/EBU inputs on AES/EBU outputs, and the word clock output, which runs at the same clock rate as the analog monitor output.**

- To sync the record and play channels together, or to allow the record channels to operate independently from the play channels, operate the Record channel sync mode controls.
- To change the digital transmitter options, such as professional vs. consumer mode, copy protection, non-audio mode and pre-emphasis, operate the Digital output options controls. When pre-emphasis is turned on, the CDX•D8 selects 50/15 μ S pre-emphasis.
- To make each of the channels operate independently rather than synchronized together, operate the Independent channel mode controls.

Analog Output page



This page contains the settings for the analog monitor outputs. By changing these controls, you can change how the CDX•D8 analog output monitors the AES/EBU inputs and outputs.

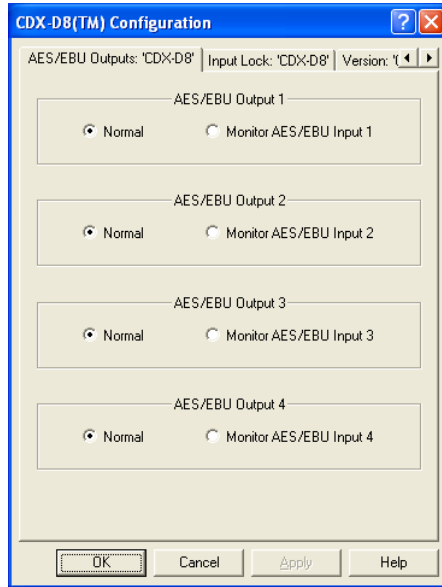
- To turn off monitoring for an input or an output, set the slider to -INF dB (all the way to the left).
- To turn on monitoring for an input or output, set the slider to any other position.

If you are playing and recording simultaneously, you will be able to hear the mixed playback and record data.

Remember that setting the monitor levels too high can result in distorted output.

Please note that monitoring does not affect the data being recorded.

AES/EBU Outputs page



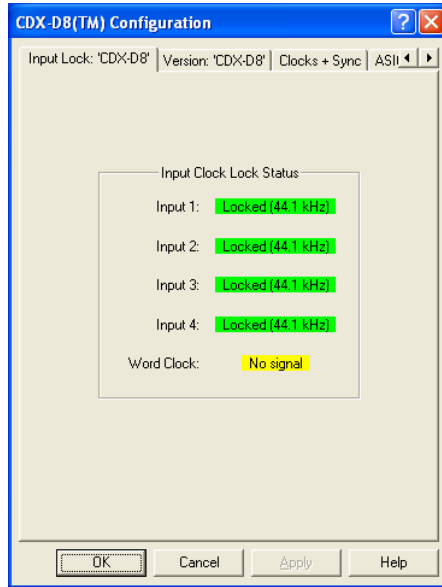
This page allows you to change the way the AES/EBU outputs work. Normally, the AES/EBU outputs are used to play back audio from your computer. However, each AES/EBU output can also be used to monitor the incoming audio on the corresponding AES/EBU input. Use the controls on this page to select between normal operation and monitoring the AES/EBU inputs.

- To use the card normally, select “Normal”.
- To monitor an AES/EBU input on its corresponding AES/EBU output, select “Monitor AES/EBU Input”.

In order to do this type of monitoring, the Analog monitor output selection on the “Configuration” page must be set to “Both play and record channels”.

Please note that AES/EBU input monitoring does not affect the data being recorded.

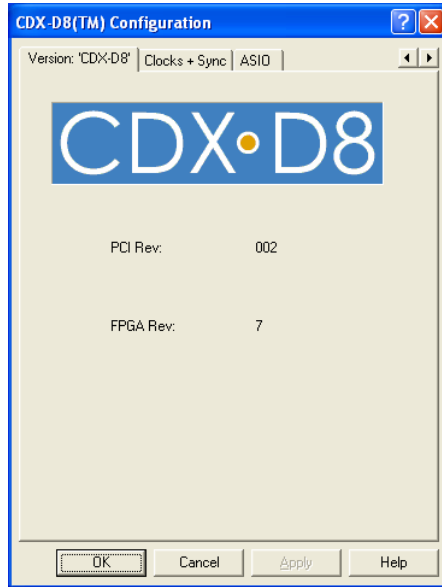
Input Lock page



This page displays the lock status of the AES/EBU inputs and word clock input on the CDX•D8.

- If an AES/EBU input channels is not locked, the display shows “Unlocked”.
- If an AES/EBU input channels is locked, the display shows “Locked”. When possible, the sample rate of the incoming signal is also shown.
- If the word clock input is not connected to a clock source, or if the clock source is too fast or too slow to detect, the display shows “No signal”.
- If the word clock input is connected to a clock source that is not at a supported sample rate, the display shows “Invalid clock”.
- If the word clock input is connected to a valid clock source, the display shows the approximate sample rate of the incoming signal.

Version page



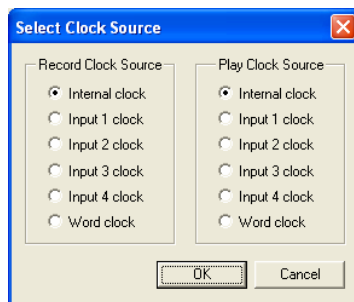
This page shows the hardware and firmware version information for your CDX•D8. This information is helpful for our technical support engineers, should you have any problems with your CDX•D8.

Clocks + Sync page



Each CDX•D8 can choose from a number of clock sources. On this page, you can choose the clock source for each CDX•D8.

- Right-click the CDX•D8 you want to change, and select “Change clock sources”. Then, select the desired clock source for the inputs and the outputs:



- Internal clock: use the internal sample clock.
- Input 1-4 clock: use the clock from the corresponding AES/EBU input.
- Word clock: use the clock from the word clock input connector.

Please note that some clock combinations are not allowed:

- If the record clock is set to the internal clock or the word clock, the play clock cannot be one of the AES/EBU inputs.
- If the record clock is set to one of the AES/EBU inputs, the play clock cannot be the word clock.
- If the play clock is set to one of the AES/EBU inputs, the record clock must be set to the same AES/EBU input.
- If the monitor output selection is set to monitor both record and play channels, the record clock and the play clock must be set to the same clock source.

The CDX•D8 also provides a word clock output. The word clock output runs at the same rate as the analog monitor output.

Note: When using external clock sources (AES/EBU inputs or word clock input), please close your audio application software before changing cables or changing the sample rate of the external clock source. This allows the CDX•D8 to properly synchronize with the external clock source when you restart your audio application software.

One CDX•D8 can act as the clock master for other CDX•D8 cards. Cards that are configured to slave to a master also start recording and playback in sync with each other using Digital Audio Labs' WavSync™ technology.

- To make a CDX•D8 the clock master for all other CDX•D8 cards, right-click the CDX•D8 you want to be the clock master and select “Become clock master”.
- To make one CDX•D8 be the clock master for another “slave” CDX•D8, drag and drop the slave onto the CDX•D8 you want to be the clock master. Only one CDX•D8 can be the clock master at any one time.
- To stop a CDX•D8 from slaving to a master, either right-click it and select “Stop being a slave”, or drag and drop it onto the Sample Clock icon.
- To stop a CDX•D8 from being a clock master, right-click it and select “Stop being a clock master”.

Please note that in order for a multi-card CDX•D8 configuration to work properly, you will also need to install a synchronization cable between all CDX•D8 cards in your computer. For more information about this, please see the “Using More Than One CDX•D8 Card” section below.

ASIO page



This page allows you to change the buffer setting for applications that use the ASIO CDX•D8 driver, such as Cubase/VST.

- To change the buffer setting, operate the slider control. The buffer size is specified in milliseconds.

Please note that this buffer setting does not apply when using the ASIO Multimedia or ASIO DirectSound drivers. These two ASIO drivers have their own control panel to set buffer sizes.

Using More Than One CDX•D8 Card

Note: This section only applies to multiple CDX•D8 card configurations that require either sample clock synchronization or start/stop synchronization. If you will be using only one CDX•D8 card in your computer, if you do not require all CDX•D8 cards to use the same sample clock or if you do not require all CDX•D8 cards to start and stop at the same time, the information in this section does not apply to you.

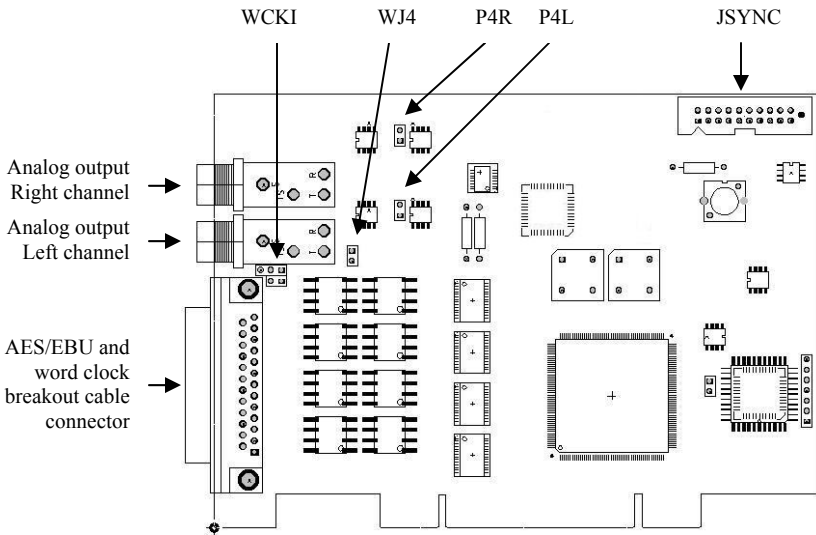
Some applications may require more than four synchronized AES/EBU stereo input or output channels. For these situations, the CDX•D8 allows multiple cards to be synchronized to a single sample clock and started and stopped at the same time using Digital Audio Labs' WavSync™ technology. To allow this synchronization to take place, all CDX•D8 cards must be installed in physically adjacent PCI slots and a synchronization cable must be connected between each of the CDX•D8 cards. To obtain a synchronization cable, please contact Digital Audio Labs. If you require synchronization of more than three CDX•D8 cards, please contact Digital Audio Labs technical support.

Note: It is important to use the correct synchronization cable for your CDX•D8 configuration. Do not attempt to use a 3-card synchronization cable in a 2-card system. If you are not installing the synchronization cable during the CDX•D8 card installation process, you must shut down, power off, unplug and open your computer as described in the “Installing The CDX•D8 In Your Computer” section above before installing the synchronization cable. For best results, the CDX•D8 card that will be the clock master should be at the end of the synchronization cable.

To install the synchronization cable, plug one of the synchronization cable connectors into the CDX•D8 synchronization connector marked “JSYNC”, located at the top right corner of each CDX•D8 card. The cable should connect smoothly between each card, with no twists in the cable, and each cable connector should be completely seated into the synchronization connector on each CDX•D8 card. There must be no unused connectors on the synchronization cable.

To enable synchronization between your CDX•D8 cards, double-click the “Configure CDX•D8” icon on your desktop to bring up the CDX•D8 Control Panel. Follow the instructions in the “Configuration Settings: Clocks + Sync page” section above to make one of your CDX•D8 cards the clock master. This will also enable play and record synchronization for the CDX•D8 cards in your system.

Jumper Settings and Connector Information



The CDX•D8 has three jumper-selectable configuration options.

P4R, P4L jumpers: analog monitor output level selection

These jumpers allow selection of either +4 dBu or -10 dBV output levels on the analog monitor outputs.

- +4 dBu: P4R, P4L jumpers installed (default)
- -10 dBV: P4R, P4L jumpers removed

WCKI jumpers: word clock mode selection

These jumpers allow the word clock input and output to be connected or disconnected from the breakout cable.

- CDX•D8 mode: word clock input and output supported on pins 25 and 13 (default)
 - [■ ■] upper jumper installed on rightmost two pins
 - [■ ■] lower jumper installed
- Alternate mode: no word clock input or output, pin 25 grounded, pin 13 open
 - [■ ■■] upper jumper installed on leftmost two pins
 - ■ lower jumper removed

WJ4 jumper: word clock input termination selection

This jumper allows the word clock input to be terminated.

- termination on: WJ4 jumper installed (default)
- termination off: WJ4 jumper removed

JSYNC Connector

The JSYNC connector is used for the WavSync™ synchronization cable. For more information about this, please see the “Using More Than One CDX•D8 Card” section above.

AES/EBU and Word Clock Breakout Cable Connector Pinout

Pin #	Signal
1	+TX4
2	Ground
3	-TX3
4	+TX2
5	Ground
6	-TX1
7	+RX4
8	Ground
9	-RX3
10	+RX2
11	Ground
12	-RX1
13	Word clock output (CDX•D8 mode) No connection (Alternate mode)
14	-TX4
15	+TX3
16	Ground
17	-TX2
18	+TX1
19	Ground
20	-RX4
21	+RX3
22	Ground
23	-RX2
24	+RX1
25	Word clock input (CDX•D8 mode) Ground (Alternate mode)

FCC and CE Compliance Statements

This device complies with Part 15 of the FCC Rules. Operation is subject to the following two conditions: (1) this device may not cause harmful interference, and (2) this device must accept any interference received, including interference that may cause undesired operation. This equipment has been tested and found to comply with the limits for a Class A digital device, pursuant to Part 15 of the FCC Rules.

These limits are designed to provide reasonable protection against harmful interference when the equipment is operated in a commercial environment. This equipment generates, uses, and can radiate radio frequency energy and, if not installed and used in accordance with the instruction manual, may cause harmful interference to radio communications. Operation of this equipment in a residential area is likely to cause harmful interference in which case the user will be required to correct the interference at his/her own expense.

This product complies with the European CE regulations EN 50081-1 and EN 50082-1.

Warranty Statement

LR Sound, Inc. warrants the CDX•D8 against defects in material and workmanship for a period of one year from the date of purchase. During this period, LR Sound, Inc. will, at its option, either repair the defective unit or replace it with a new or rebuilt one. This warranty does not cover damage due to abuse, misuse, or accident, damage due to operation contrary to the instructions provided herein, units on which the product serial number has been removed or altered, or units that have been serviced by unauthorized personnel.

All implied warranties, including warranties on merchantability and fitness, are limited in time to the length of this warranty. Some states do not allow time limitations on implied warranties, so this limitation may not apply to you.

The liability of LR Sound, Inc. is limited to the repair or replacement of the product. LR Sound, Inc. shall in no way be held liable for incidental or consequential damages resulting from the use of the CDX•D8 or its driver software, including, without limitation, damages from loss of business profits, business interruption, loss of business information or other pecuniary loss. Some states do not allow the exclusion or limitation of incidental or consequential damages, so the above limitation or exclusion may not apply to you.